



+263 77 320 4971

+263 29 2471928



mahs@szc.adventist.org



@Maranatha Adventist High School



www.maranatha.ac.zw



STUDENT HANDBOOK

2025 - 2026



MARANATHA HIGH SCHOOL



MISSION STATEMENT

TO PREPARE LEARNERS SPIRITUALLY, PHYSICALLY, MENTALLY AND SOCIALLY, TO BE PRODUCTIVE CITIZENS IN THIS WORLD AND THE WORLD TO COME.



VISION

A SCHOOL THAT GIVES LEARNERS AN EDUCATION OF EXCELLENCE AND CULTIVATES INNOVATIVENESS IN THE STAFF FOR THE DEVELOPMENT OF THE LEARNER, THE TEACHER AND THE SCHOOL AND TO REVEAL CHRIST AS THE CREATOR AND SAVIOUR OF MANKIND



VALUES

CHRISTLIKENESS, EXCELLENCE, TEAMWORK, INNOVATION, TRANSPARENCY, PROFESSIONALISM, BIBLICAL SPIRITUALITY, INTEGRITY, ACCOUNTABILITY



ZIMBABWE SCHOOLS
EXAMINATION COUNCIL



MARANATHA HIGH SCHOOL

2025 – 2026

S T U D E N T S H A N D B O O K

CONTENTS PAGE

About MAHS	Page 02
Head's Note	Page 03
Philosophy, Mission, Vision, Values, Objectives & Detailed Culture	Page 04
History of the school history in pictures	Page 05
School Logo	Page 06
Administration, Authorization, Accreditation	Page 07
Organizational Chart	Page 08
Contact Details	Page 08
Facilities	Page 09
Pictures of Facilities	Page 10 – 11
Admission Requirements	Page 12
School Rules	Page 13
Cell Phone Policy	Page 14
Language Policy	Page 15
Uniforms & dress Code	Page 16 – 18
Pictures of Students in Uniform	Page 19
Curriculum	Page 20 – 21
Co – Curricular Activities	Page 22 – 23
Pathways, Courses & Opportunities	Page 24

ABOUT MAHS

Students Song

Maranatha Maranatha

UJes uyeza masinyane njalo

Masilindeni, siqhaphela

Masilinden ukuyakhona

Chorus:

Uyes uJesu uyeza (Coming again)

Uyeza masinyane

(Coming again)

Uyez uJesu yeza ohhhhhhhh

Uye..... ye.....za

Jesus is coming again

(Coming again)

Coming to take us back home (oh back home)

Friends are you ready to go

Oh hoooooooo

Uye..... ye za

SCHOOL MOTTO

Christ in Education

[Shaping students' values, morals and character through biblical teachings]

Proverbs 1:7 "The fear of the Lord is the beginning of knowledge; fools despise wisdom and instruction"

Dear Student

Welcome to **Maranatha Adventist High School**. If you step into Maranatha today, you will find lovable, diligent, well – behaved, motivated and even some mischievous students, who nevertheless are all eager to experience success. An experienced team of competent, caring and committed Christian staff, together with a well maintained, safe and secure environment conducive to learning, enabling the implementation of a “whole person” approach to developing students’ body, mind and spirit. In addition to our dynamic chaplaincy provides pastoral care and counseling services to students and runs a strong spiritual programme.

Maranatha in Perspective

Maranatha Adventist High School is part of the Seventh - day Adventist education in Zimbabwe and is based in Bulawayo, the second largest city in Zimbabwe. It was started in 2001 and was the first Adventist school in the high-density suburbs of Bulawayo offering secondary education as a result it has a high demand for places. Within the school grounds now houses the Maranatha Main Seventh – day Adventist Church. The school had its first Advanced Level students in 2009, today the school offers both Ordinary level and Advanced level under ZIMSEC. As from 2026 the school will be able to offer the Cambridge examination at both levels. MAHS is a registered school under the Education Act and is administered as a government aided school. It is guided by the Ministry of Primary and Secondary Education and the School Board comprising of the executive officers of South Zimbabwe Conference of the Seventh – day Adventist church in policy implementation and compliance and hence it falls under mission schools. Our teachers are qualified and experience and some are Examination Markers and item writers under ZIMSEC.

We have high Christian standards and we expect all members of our school family to co-operate and abide by these standards. Remember that good conduct and a positive attitude to self, work and play are absolutely necessary, if the goals we set are to be achieved.

Rules are established only to ensure that you can get on with your core business of learning in a safe environment. If you know and practice what is required of you, I am sure that you will benefit from your educational opportunities here. In addition, you will not only achieve your goals but you will be able to speak of MAHS with pride and affection long after you have graduated.

I, therefore encourage all stakeholders to co-operate in this mission, seeking God’s leadership and guidance that we may continue to make a difference in our country and above all inherit our heavenly home.

Together we can and we will make Maranatha Adventist High School a center of academic excellence.

Regards

K Hindoga

School Head



**THE SCHOOL HEAD MASTER
MR K. HINDOGA**

PHILOSOPHY, MISSION, VISION, VALUES, OBJECTIVES AND DESIRED CULTURE

PHILOSOPHY

We believe that God created a perfect man in His own image. However, because of sin, man lost his original state. The total process of the Seventh- day Adventist education seeks to redeem men to Christ and prepare him for his imminent return.

MISSION

To prepare learners spiritually, physically, mentally and socially to be productive citizens in this world and the world to come.

VISION

A school that gives learners an education of excellence and cultivates innovativeness in the staff for the development of the learner, the teacher and the school and to reveal Christ as the Creator and Savior of mankind. [A center of academic excellence]

VALUES

Christlikeness : Reflecting God's love and grace in daily life

Excellence : Consistently delivering quality results and exceeding expectations

Teamwork Collective efforts that lead to better outcome than individual efforts

Innovation : Embracing creativity and finding new solutions to problems

Transparency Being open and clear in all interactions

Professionalism : Demonstrating expertise, reliability and a commitment to high standards in ones work

Biblical Spirituality: Living according to Biblical principles

Integrity : Being honest, trustworthy and morally upright

Accountability : Taking responsibility for one's actions and decisions

MOTTO

Christ in Education

Shaping students' values, morals and character through biblical teachings

OBJECTIVES:

1. To achieve and maintain a high pass rate of 100%.
2. To develop and maintain a competent staff.
3. To set high standard of good morals in the pupils and staff.
4. To expose pupils and staff to the knowledge of God and Christ's imminent return.

True education means **more than the pursual of a certain course of study**. It means more than a preparation for the life that now is. It has to do with the whole being, and with the whole period of existence possible to man. It is the harmonious development of the physical, the mental, and the spiritual powers. – Christian Education E.G White

HISTORY OF THE SCHOOL IN PICTURES



SCHOOL LOGO



The three stars	The Three Angels Message [Revelation 14:1 – 12]
The Bible:	Our Source of instruction [Palms 119:105]
The Flame:	The Holy Spirit [John 16:13]
The Hat:	The Head [John 17:7]
The Three Hs:	The Heart [Proverbs 3:5]
The Hoe & Shovel:	The Hand [Proverbs 10:4]
Christ in Education:	Shaping students' values, morals and character through biblical teachings

SIGNIFICANCE OF THE COLORS ON THE SCHOOL LOGO

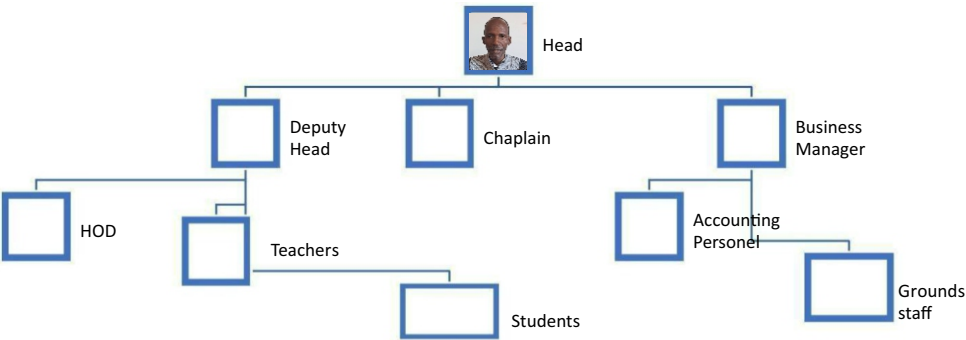
Gold	Purity and refinement also reflecting the process of spiritual growth and purification
Maroon	Represents the blood of Christ, symbolizing sacrifice, atonement and redemption
White	Revelation and understanding, highlighting the importance of spiritual illumination
Green	Represents growth and renewal, prosperity God's blessings and also highlighting God's role as Creator

ADMINISTRATION, AUTHORISATION, ACCREDITATION

MAHS is a government - aided school run operated by board representatives from the South Zimbabwe Conference, the School Development Committee comprising of parents and management and the school administration. It is registered by the Ministry of Primary and Secondary Education under the Education Act.

The school is well run by developing and evaluating policies that undergird overlapping arenas of fiscal responsibilities, compliance with the law, community partnership, human resources development, and vision-mission alignment. The school Administration and Heads of Departments deals with the day-to-day operational agenda of the school. This decision-making body on an operational level, reports to the School Board and Ministry of Primary and Secondary Education who operates on the governance level. MAHS is accredited by the Accrediting Association of Adventist Schools.

ORGANISATIONAL CHART



CONTACT DETAILS

Address	Stand No. 3553 Nketa 7, Bulawayo Zimbabwe	
Telephone	+263 2 92471928	
Email	mahs@szc.adventist.org	
Hours	During the school term	Mon – Thurs 7 30am - 4 pm
		Friday 7 30am 1 pm
	During the holiday	Mon – Thurs 8 30 am – 3pm
		Friday 8 30 am – 1 pm
Accounts Office	During the school term	Mon – Thurs 7 30 am - 1 pm
		Friday 7 30am 12 pm
	During the holiday	Mon – Thurs 8 30 am – 1pm
		Friday 8 30 am – 12 pm

FACILITIES

Classrooms	The school has fully furnished classrooms, with white boards and some classrooms have interactive boards for a higher learning experience. Our classes have a teacher pupil ratio of 1:45
Tuck Shop	The school has a fully equipped tuck shop serving both students and staff members with snacks, pastries, cooked foods, fruits and drinks. There is staff canteen that serves staff members with meals.
Library	The school has a small library that is stocked with academic, spiritual and a wide range of encyclopedias and other literature books.
Computer Room	The school has a computer room that is fully furnished with laptops and is used by students who are studying Computer Studies under HEXCO
Food Technology	There is a fully equipped classroom dedicated to students who are studying Bakery Studies under HEXCO
Textile Technology	There is a fully equipped classroom with all equipment for students studying Garment Construction
Music Room	The school boasts of a fully equipped Music Room with modern and traditional instruments used by students studying Musical Studies under ZIMSEC
Agriculture	The school has a fully functional garden and poultry run for students studying Agriculture under ZIMSEC and also for school agricultural projects.
Uniform Factory	The school boasts of a fully equipped uniform factory manned by qualified personnel. All school uniform and sportswear are available for the student at the school.
Pastoral Care	The school has a Chaplain who provides the students with spiritual programs and also by the Guidance and Counselling department which involves a number of teachers.

Science Laboratories

The school has five fully equipped laboratories, two serving the junior classes and three serving the senior classes. The three laboratories are housed under the double storey building which has five classes, teacher offices, and a lecture theatre.

PICTURES OF FACILITIES



BUILDING ST 1



COMPUTER ROOM



FOOD TECH



LABORATORY



LIBRARY



MUSIC

PICTURES OF FACILITIES



INTERACTIVE BOARD



TEXTILE TECH



TUCK SHOP



UNIFORM FACTORY



WEATHER STATION

ADMISSION REQUIREMENTS

The school does not discriminate on grounds of color, gender, ethnic origin, race or religious affiliation. Any child who is willing to abide by the school regulations may be admitted to the school.

Form 1& 5 Candidates will be expected to produce the original ZIMSEC grade 7 or form 4 result slip, confirmation letter from church pastor and testimonial from the former school.

Successful students will be required to pay full fees upon admission.

Forms: 2, 3, 4 & 6; A good progress report with at 5 subjects passed, a letter of recommendation from church pastor and school. Places will be offered depending on the availability of vacancies.

FINANCIAL POLICY

New students

Every parent must sign all necessary forms before the student is accepted in the school.

Tuition fees are paid in full before a child is admitted in class.

Alternate payment options may be available. Please contact the school accounts office for details.

RETURNING STUDENTS

School fees and levies are payable on or before the opening of a new term. Parents may be allowed payments arrangements, but all fees must be paid by the 3rd month of each term.

School records will not be made available to parents or for transfers to another school until all the financial obligations are met. Accounts must be current for ALL students.

Fees are payable at the bank or at the school.

When payments have been made at the bank, parents must submit their proof of payment to the school accounts office within three days.

Our refund policy depends on the date of withdrawal of the student.

SCHOOL RULES

The school expects students to conduct themselves in a decorous manner befitting a Christian environment. Rules are set of guidelines meant to make sure students learn in a safe environment.

1. Be present and punctual for all school activities.
2. Roaming around aimlessly is not allowed, this includes toilet visitations during lessons.
3. Be smart and take pride in your appearance.
4. Keep the school environment clean at all times.
5. School property must be well cared for. You might be asked to replace any careless or deliberate damage to school property. No graffiti.
6. The consumption of alcohol or any intoxicating beverages and smoking is a serious offence that may result in expulsion or exclusion from the school.
7. Respect and greet all adults – members of staff and visitors
8. Fighting / bullying other students is not allowed
9. Pupils may not personally entertain visitors within the school premises – refer all visitors to the reception
10. Students must walk along the school pathways
11. Any problems and culprits must be reported to the relevant authorities
12. Stealing is a serious and punishable offence
13. .
14. Prefects and class monitors are arms of the school administration. They must be accorded due respect.
15. Students are encouraged to use clean speech always, no vulgar language.
16. Students are ambassadors of the school. they should not engage in behavior and activities which bring the school into disrepute

In the case of disciplinary infractions, appropriate disciplinary measures will be taken to redress. The school practices redemptive disciplinary principles as guided by Adventist Education tenants. Disciplinary procedures will also be followed according to the guidelines prescribed by the MOPSE [Circular P.35 updated]

Over and above, there is a school Chaplain whose role is to offer Christian guidance and counselling to both students and staff. There is also a guidance and counselling department. The roles of these institutions are to ensure that students are assisted. Students are expected to be self-disciplined. They should respect the rights of others.

[And the second is like unto it, Thou shalt love thy neighbour as thyself.. KJV — Matthew 22:39]

CELL PHONE POLICY

Policy Statement

The school does not encourage the use of cell phones or any other electronic devices to be brought to school. The school recognizes that cell phones play an important and useful role in our daily lives and particularly for those relying on public transport, contribute to a feeling of safety and security.

However, this policy is to encourage learners not to make use of cell phones or any other electronic devices during school hours. Learners may, in an emergency ask the Senior Master/Woman's office to contact parents/guardians. There is significant pressure on learners to have latest model cell phones or electronic devices. Parents are often placed under financial pressure to acquire such a device and learners may become victims of theft. Unfortunately, this also gives learners access to unsuitable material, the ability to send unwanted material to one another and to communicate with unsuitable elements. Thus, the school cannot take any responsibility for material received or sent during or after school hours. Learners' phones should not be brought to school unless a teacher makes an appeal through the school administration for phones to be brought only for educational purposes.

While it is appreciated that this policy may cause inconvenience for learners and their parents/guardians, it must be understood that it has been devised with the best interests of learners at heart, with consideration for their education and the safety of themselves and their possessions. It is the responsibility of every parent/guardian to ensure that learners follow the school code of conduct and ensure that no cell phones are brought to school.

- Cell phones may not be used for any purpose without the permission of a teacher.
- Teachers reserve the right to give and take away permission for students to use cell phones and other devices.
- If students are granted permission to use their cell phones for specific research purposes in class, such as finding certain information necessary for their work to continue, this may only take place with the permission and supervision of the teacher.
- Teachers will give sufficient notice to the school administration if a device is required and such information will be communicated to the parents of the concerned class.
- Cell phones must be handed over to the teachers as soon as learners arrive at school and be collected at dismissal for safe keeping.
- Cell phones are not in any circumstances to be allowed in the examination rooms.
- If a learner brings a cell phone or any other device to school, it is done so at their own risk. The school will not take any responsibility for the loss, stolen or damaged device.

- If the above rules are not adhered to, the cell phones or device brought to school will be confiscated and kept until the end of the term.

LANGUAGE PHILOSOPHY

At Maranatha Adventist High School all teachers are language instructors. All learners are language learners regardless of what language they speak. Each student has his or her own background and unique contribution which is crucial for defining cognitive development and in maintaining cultural identity.

As a school we make a commitment to our students and parents to provide a learning community that promotes and supports language development in a bilingual environment that fosters confident, creative and responsible learners through inquiry-based instruction and learner centred classrooms.

SCHOOL LANGUAGE PRACTICES

The language program is as follows;

- Mother tongue: IsiNdebele is learnt from Form one up to Upper Six.
- Language of instruction: English is learnt from Form one up to Upper six.

LANGUAGE PLANNING

Students need to be exposed to languages most of the time in order to be proficient in both the mother tongue and the language of instruction.

Subjects are taught mostly in English and only Ndebele language is taught in the local language.

Time is allocated in the timetable for the teaching and learning of IsiNdebele and English language.

NB: Students communicate in English within the campus except during indigenous languages lessons.

UNIFORMS & DRESS CODE

All pupils shall wear the proper school uniform correctly in and outside the school.

BOYS (FORMS 1- 4)

Summer uniform

Grey trousers (no skinny trousers)

Branded White short sleeved shirts

Grey socks

Black school shoes with laces (not formal)

Branded Maroon tie

Branded Maroon school hat

Sleeveless maroon jersey (with no stripes on the arms)

Light maroon V – neck jersey

Winter uniform

Grey trousers (no skinny trousers)

Branded White long-sleeved shirt

Grey socks

Black school shoes

Branded Maroon tie

Maroon blazers

Maroon V – necked jersey (heavy or light knit)

Black plain leather belt

Sleeveless v necked jersey

Branded Maroon anorak

Maroon woollen hat (In winter only)

BOYS FORM 5 – 6

Branded White short sleeved shirt (summer)

Branded White long-sleeved shirt (winter)

Grey trousers (not skinny or formal)

Branded Grey tie

Grey sleeveless jersey (without stripes)

Grey blazer

Branded Grey tie

Branded Grey anorak – winter

Grey V – necked jersey – winter (without stripes)

Black socks

GIRLS FORM 1 – 4

Maroon 3 panel skirt with pocket on right side and elastic on waist band

Branded Beige short sleeved blouse (summer)

Branded Beige long sleeved blouse (winter)

Branded Maroon school tie

Maroon V necked sleeveless jersey (no stripes)

Maroon V necked long sleeved jersey (winter)

Branded Maroon anorak

GIRLS FORM 5 – 6

Grey 3 panel skirt with pocket on right side and elastic on waistband

Branded White short sleeved blouse (summer)

Branded White long-sleeved blouse (winter)

Branded School tie

Branded Grey hat

Grey blazer

Branded Grey anorak

Grey sleeveless jersey (with no stripes)

Grey V – necked jersey

Grey woollen hat – winter

Black flat heeled pumps worn with pulling socks

Black school shoes worn with white ankle socks

PREFECTS

Navy blue panel skirt with pocket on right side and elastic on waist band

Navy blue trousers for boys

Light blue short - sleeved blouse for girls (summer)

Light blue shirt for boys (summer)

Light blue long sleeved blouse girls (winter)

Light blue long sleeved shirt boys (winter)

Stripped navy blue and silver tie for both girls and boys

Navy blue V – necked jersey or Navy blue blazer for both boys and girls

Branded Navy blue anorak

Navy blue school hat

NB: Most of these items are obtainable from the school's uniform factory.

SPORTS WEAR

Boys (Form 1 - 6)

Branded Maroon track suit

White boxer short

Branded House T – shirt

White sport shoes

White hat

Girls (Form 1 – 6)

School branded Maroon track suit

Maroon shorts with school logo

Branded House T – shirt

White sports shoes

White hat

No jewellery (bracelets, rings, necklaces, earrings) is allowed to be worn with school uniform, tweezing of eyebrows is not allowed and no make-up is allowed.

Hairstyles for girls only (F5 – 6) free hand, corn row plaits, twist braids (no locks are allowed)

Forms 1 – 4 short neat haircut,

Hairstyles for boys

Shave hair, Neatly trimmed hair (no shade or line hairstyles)

Girls hair must be kept short and neat (tail – comb size). Forms 1 to 4 no perm, no dyeing of hair, no plaiting of hair. Lower six and upper six girls are allowed plaiting freehand and braids (twist style). All boys shave their hair, no shade or line hair styles.

PICTURES OF STUDENTS IN PROPER SCHOOL UNIFORM



CURRICULUM

The school a wide range of subjects as outlined in the MOPSE curriculum framework. Above that, the school offers tutorials grounded in the Bible. Integration of faith and learning is practised in all facets of the school. This is in line with the Philosophy of Adventist Education. Lessons do not only begin with prayer, but Biblical concepts are infused into the syllabus subject matter.

School offers the following subjects with thirty minutes per period

FORM 1 - 4 ACADEMICS AND PRACTICALS

TECH VOC SUBJECTS

Building Studies , Bakery Studies, Garment Construction, Computer Studies (HEXCO), Musical Arts, Agriculture & Physical Education& Mass Displays, Textile Technology and Design, Food Technology and Design (ZIMSEC)

FORMS 1 - 2

Combined Science, Mathematics, English Language, Ndebele Language, Heritage Studies, Bible Knowledge , History, Geography, Principles of Accounts , Tech Voc. subject

FORMS 3 – 4

All learners do all of the following subjects regardless of the pathway

Mathematics, English language, Combined Science, Ndebele, Heritage Studies

Electives (Sciences)

Physics , Biology , Chemistry, Geography

Humanities/Arts

History, FRS, Literature in English

Commercials

Business Studies, Economics, Business Enterprises and Skills, Principles of Accounts

FORM 5 – 6

Arts: Ndebele language, Literature in Ndebele, Family and Religious Studies, History, Heritage Studies, Literature in English, Physical Education & Mass Displays

Sciences : Crop Science, Pure Mathematics, Physics, Biology, Chemistry, Geography, Computer Science, Sports Science, Physical Education & Mass Displays

Commercials : Business and Enterprises Skills, Economics, Accounting, Statistics, Physical Education & Mass Displays

Assessment

Two forms assessments are carried out in the school. These are continuous/ formative assessment and summative/ terminal assessment.

Formative/ continuous assessment is carried out throughout the year. This comes in the form of class exercises, homework, in class tests, monthly tests and end of term tests.

Summative assessment

This comes at the end of a four year [O Level] and a two year [A Level] course through examinations administered by legally recognised examination bodies like ZIMSEC, HEXCO and Cambridge. Currently, students are prepared for ZIMSEC and HEXCO examinations.

For ZIMSEC examinations there is continuous assessment in the form of School Based Projects with are research based and are carried out over a period of a year.

Final examinations contribute 80% and School Based Projects contribute 20% to the final grade.

ACADEMIC YEAR

The school year is divided into three terms [semesters] and three holidays or semesters breaks

Term 1	January to March
Holiday	April / May
Term 2	May to August
Holiday	August/September
Term 3	September to December
Holiday	December / January

ZIMSEC Ordinary Level and Advanced Level registration begins in March to April and the students take their final exam from September to November.

During the third term each year the school hosts a Academic and Non Academic Prize Giving day where students, alumni, parents, sister and neighbouring schools grace the occasion. This is a high profile program for the which is graced by a Guest of Honour chosen with much care for this particular event.

CO – CURRICULAR ACTIVITIES

Co-curricular activities are an integral part of the school's educational program. These affords students opportunities to develop their abilities and various skills. They offer real life and work experiences. All students are therefore to take part in these for their personal growth.

Sporting disciplines

Sporting activities are conducted within the confines of Christian principles where competition against one another is discouraged. Students are encouraged to attain the standards set. With this in mind, students participate in sports as a way of keeping their bodies fit. They shun all forms of cheating.

[Whether therefore ye eat, or drink, or whatsoever ye do, do all to the glory of God.
. KJV — 1Corinthians 10:31]

Athletes, Soccer, Netball, Volley ball, girls soccer, Hand ball

Religious Activities:

Devotions, A. Y, Chapel, V.O.P, Baptismal class, Week of Spiritual Emphasis, Prayer Band, Pathfinder Club

Clubs

Junior Achievement Club, Music Club, Conservation Club, Debate Society, Media Club, AIDS Awareness, Chess, Interact Club,

DAY	ACTIVITY 7:40 – 8 : 15	MORNING 8 : 15 – 13 : 50	AFTERNOON 14 : 20 – 15 : 30
MONDAY	ASSEMBLY	LESSONS	SPORTS/CLUBS
TUESDAY	DEVOTION	LESSONS	LESSONS/STUDY
WEDNESDAY	CHAPEL PERIOD	LESSONS	LESSONS/STUDY
THURSDAY	DEVOTION	LESSONS	AY
FRIDAY	ASSEMBLY	LESSONS	CLEANING

School starts at 7:15 am

PREFECTS

Prefects are an arm of the school administration. They derive their authority from the school staff, the Head, Deputy head and all teachers. They are the eye and the ear of the school. They breach the gap between teachers and students. they are made up of carefully selected students who have the task of instilling discipline and sense of responsibility in the other students by enforcing the school rules and leading their

colleagues in the right path. The students who are chosen to be prefects attend a leadership enrichment program which assists them to prepare for their duties.

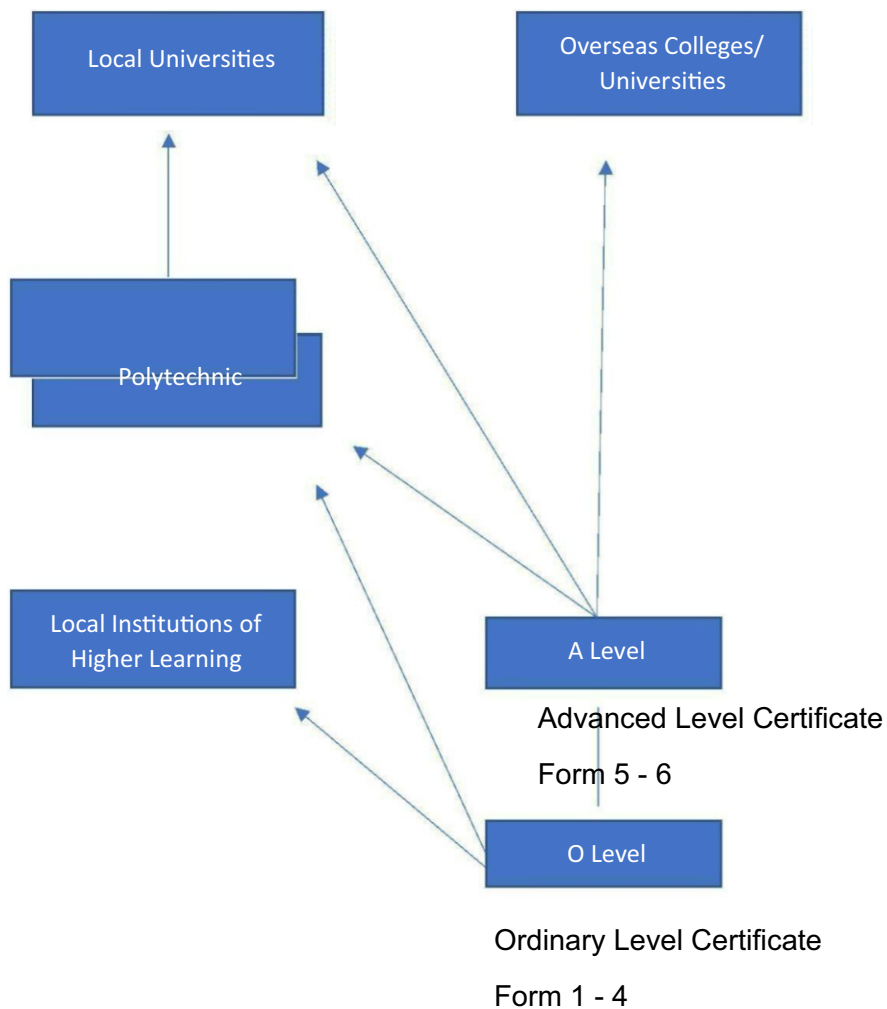
Prefects duties are : -

- To work diligently in making sure that the school rules and regulations are obeyed by all students
- To encourage punctuality amongst the school students
- Usher visitors during special events
- To ensure that pupils are properly dressed within and outside the school
- To assist teachers with morning worship, cleanliness and all class activities
- To maintain order in the campus
- To strive to present the school in good light wherever one may be
- To carry out any duty assigned by a member of staff

SPECIAL EVENTS

TERM 1	EVENT
	Orientation Programme – Form One
	Orientation Programme – Form Five
	Inter – House Sports
	Annual General Meeting (SDC)
	Week of Spiritual Emphasis
	Consultation Day F4 & 6
	Prefects Empowerment Programme
	ASSA Athletic Games
	Staff Retreat
TERM 2	ASSA Ball Games
	Week of Spiritual Emphasis
	Consultation Day F 2 & 3
	Music festival – Adventist schools
	Mid – Year Exams
	Educational trip
TERM 3	Week of Spiritual Emphasis
	Consultation Day F 1 & 5
	Speech & Prize Giving Day
	ZIMSEC Exams
	End of Year Exams

PATHWAYS TO COURSES AND OPPORTUNITIES





2025 DIARY CALENDER

01 January

Sun	Mon	Tue	Wed	Thu	Fri	Sat
		1	2	3	4	
5	6	7	8	9	10	11
12	13	14	15	16	17	18
19	20	21	22	23	24	25
26	27	28	29	30	31	

02 February

Sun	Mon	Tue	Wed	Thu	Fri	Sat
						1
2	3	4	5	6	7	8
9	10	11	12	13	14	15
16	17	18	19	20	21	22
23	24	25	26	27	28	

03 March

Sun	Mon	Tue	Wed	Thu	Fri	Sat
						1
2	3	4	5	6	7	8
9	10	11	12	13	14	15
16	17	18	19	20	21	22
23	24	25	26	27	28	29
30	31					

04 April

Sun	Mon	Tue	Wed	Thu	Fri	Sat
		1	2	3	4	5
6	7	8	9	10	11	12
13	14	15	16	17	18	19
20	21	22	23	24	25	26
27	28	29	30			

05 May

Sun	Mon	Tue	Wed	Thu	Fri	Sat
			1	2	3	
4	5	6	7	8	9	10
11	12	13	14	15	16	17
18	19	20	21	22	23	24
25	26	27	28	29	30	31

06 June

Sun	Mon	Tue	Wed	Thu	Fri	Sat
1	2	3	4	5	6	7
8	9	10	11	12	13	14
15	16	17	18	19	20	21
22	23	24	25	26	27	28
29	30					

07 July

Sun	Mon	Tue	Wed	Thu	Fri	Sat
		1	2	3	4	5
6	7	8	9	10	11	12
13	14	15	16	17	18	19
20	21	22	23	24	25	26
27	28	29	30	31		

08 August

Sun	Mon	Tue	Wed	Thu	Fri	Sat
						1
2	3	4	5	6	7	8
9	10	11	12	13	14	15
16	17	18	19	20	21	22
23	24	25	26	27	28	29
30	31					

09 September

Sun	Mon	Tue	Wed	Thu	Fri	Sat
	1	2	3	4	5	6
7	8	9	10	11	12	13
14	15	16	17	18	19	20
21	22	23	24	25	26	27
28	29	30				

10 October

Sun	Mon	Tue	Wed	Thu	Fri	Sat
			1	2	3	4
5	6	7	8	9	10	11
12	13	14	15	16	17	18
19	20	21	22	23	24	25
26	27	28	29	30	31	

11 November

Sun	Mon	Tue	Wed	Thu	Fri	Sat
						1
2	3	4	5	6	7	8
9	10	11	12	13	14	15
16	17	18	19	20	21	22
23	24	25	26	27	28	29
30						

12 December

Sun	Mon	Tue	Wed	Thu	Fri	Sat
	1	2	3	4	5	6
7	8	9	10	11	12	13
14	15	16	17	18	19	20
21	22	23	24	25	26	27
28	29	30	31			

ZIMBABWE PUBLIC HOLIDAYS

New Year's Day - 01 January
National Youth Day - 21 February
Independence Day - 18 April
Good Friday - 18 April
Easter Sunday - 20 April

Easter Monday - 21 April
Workers Day - 01 May
Africa Day - 25 May
Public Holiday- 26 May

Heroes Day - 11 August
Defense Forces Day - 12 August
Unity Day - 22 December
Christmas Day - 25 December
Boxing Day - 26 December